

CERTIFIED LAND CORNER RECORDATION

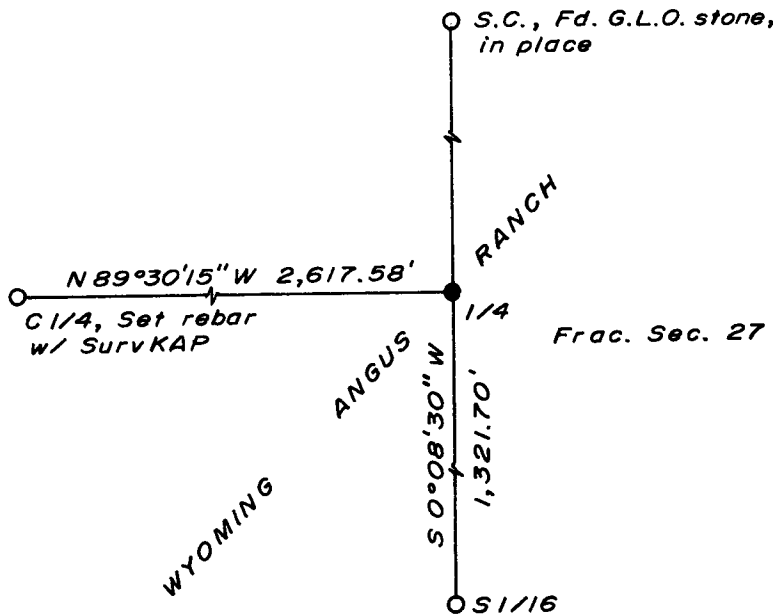
DESCRIPTION OF CORNER EVIDENCE FOUND, AND ORIGINAL RECORD (if known)

LOCATION Found 8" x 8" x 16" Granite stone with "1/4" on west face.
 1/4 G.L.O. record - Granite Boulder, 16 x 11 x 7.
 S.28 S.27
 T.14N., R.67W.
 6th P.M.

DESCRIPTION OF MONUMENT AND ACCESSORIES ESTABLISHED TO PERPETUATE THE ORIGINAL LOCATION OF THIS CORNER:

At the corner: Set 1 1/2" dia. x 30" long iron pipe with brass cap.
 Accessories: Left stone as memorial.

SKETCH, WITH COURSE AND DISTANCE TO ADJACENT CORNER IF DETERMINED IN THIS SURVEY.
 (May Sketch or Paste Reproduction on Reverse Side.)



Brass cap set 4" above ground.
 Brass cap stamped:
 T.14N. R.67W.
 S.28 1/4 S.27
 LS 519 1973

I, R.L. Hudson certify that I have carefully performed ~~or reviewed~~ the work done on the diagrammed corner as reported on this recordation form and approve the same.

R.L. Hudson Wyoming L.S. No. 519
 Signature of Surveyor Registration No.

STATE OF WYOMING,
 Office of Clerk and Recorder,
 County of Taramie

This "corner record" was filed for record on the 19 day of November, 1973, was noted on the cross-index plat and is assigned page No. _____, in book No. _____.

John B. Huismann
 County Official

Cross Index No. <u>T13</u>	T. <u>14</u>	R. <u>67</u>	<u>6</u> Mer.
_____	T. _____	R. _____	Mer.
_____	T. _____	R. _____	Mer.
_____	T. _____	R. _____	Mer.
_____	T. _____	R. _____	Mer.
_____	T. _____	R. _____	Mer.
_____	T. _____	R. _____	Mer.

Photographed ✓
Indexed *FB* ✓
Posted ✓
Assessor ✓

INDEXED FOR RECORD
1017
A. M. on the
19th day of November
73 and duly recorded in
Book _____ on page _____

John B. Williamson

County Clerk & Ex-Officio Register of Deeds
JB
Deputy